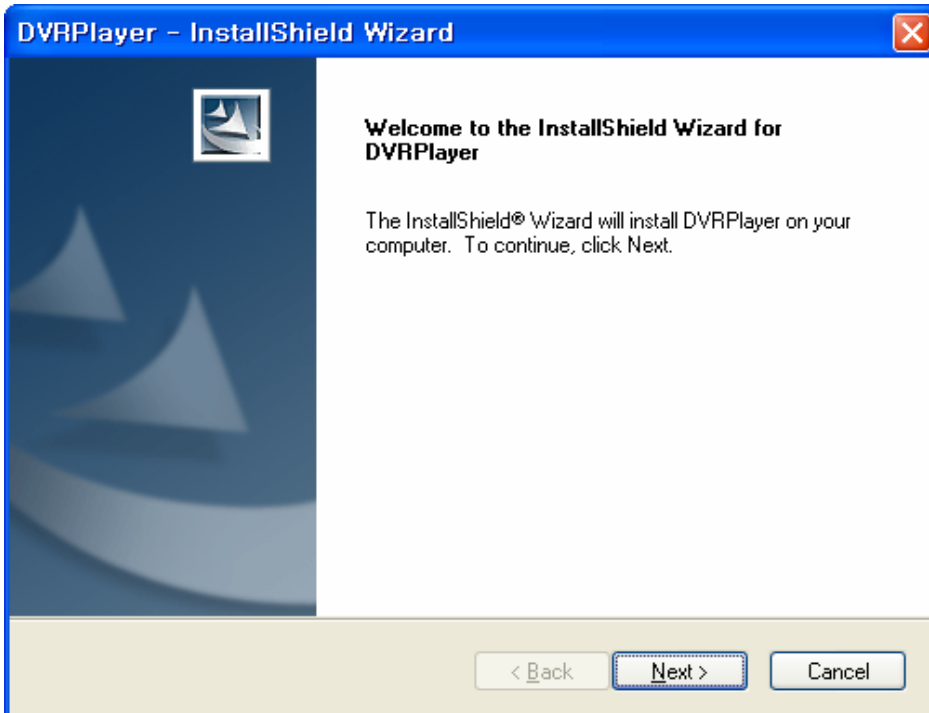


DVR Player Program Manual

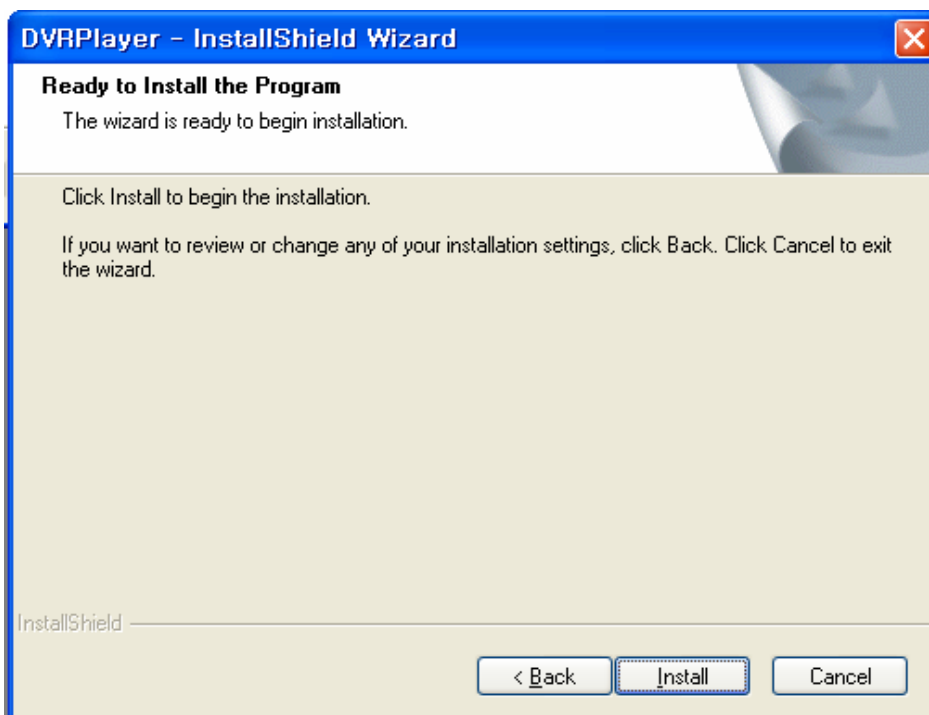
2008. 03. 24. English Version

1. DVR Player Installation

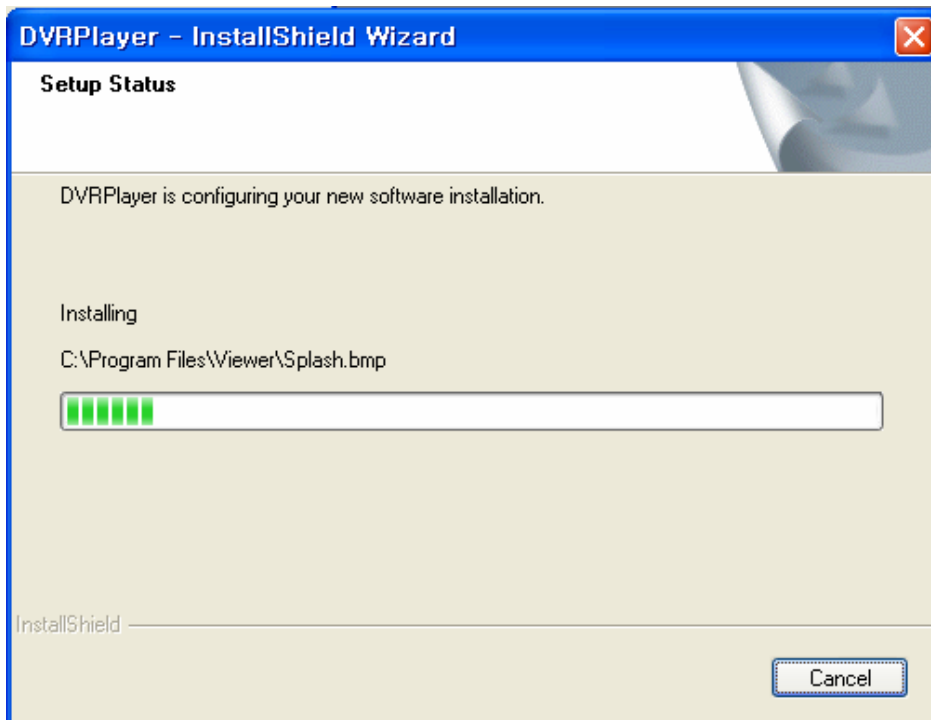
- 1) Put in the CD in the computer and Double Click the installation file, then you will see in your monitor as under. Please start the installation with click "Next".



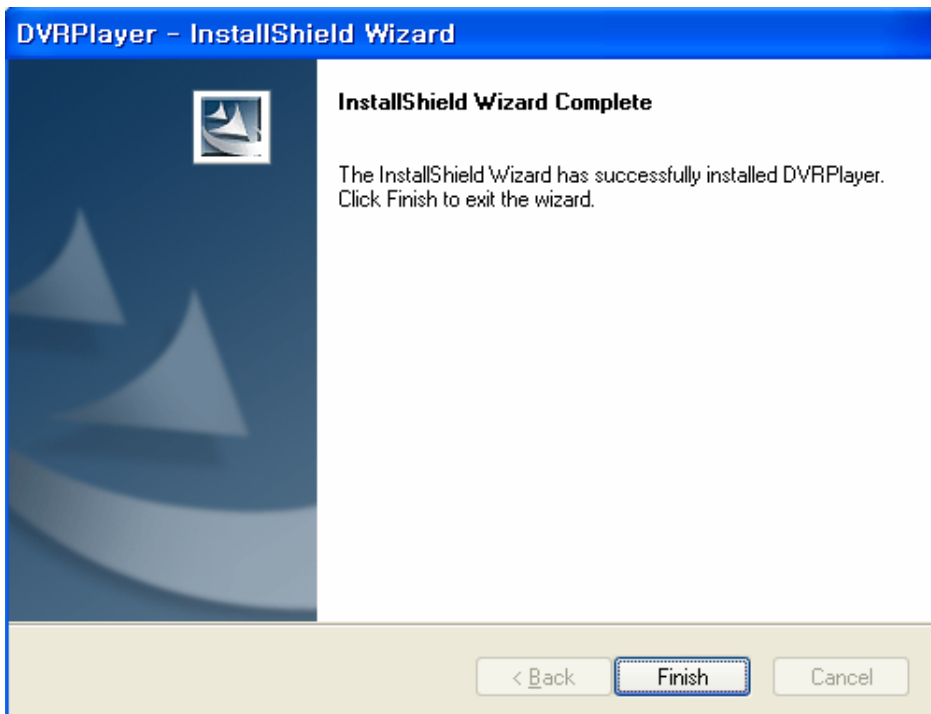
Start the installation as under,



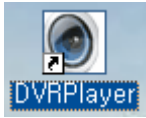
Installing as under screen,



After done the installation, Please click "Finish".

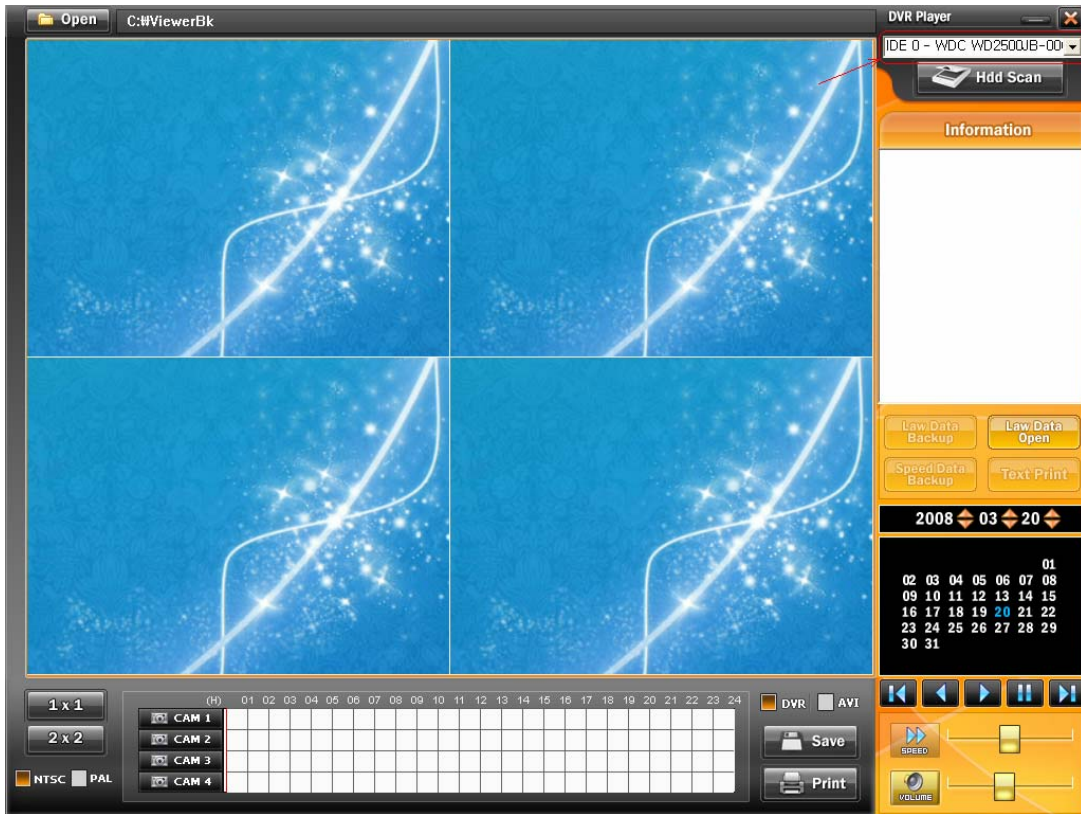


Finally the installation will be done and DVR Player Icon will be created in your computer ground screen as the under Icon picture.

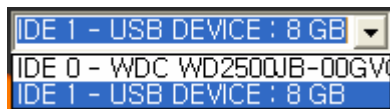


2. Main Screen

Insert the CF Memory Card to the included USB Reader and put USB Reader through at your PC USB Port. And then you can perform DVR Player with double click the Player program Icon so that you see the main screen of DVR Player as under picture.



At the above right side of the screen, you select the your USB device to save the recorded moving picture from DVR and click the device. The USB Device shows its capacity by MB or GB.



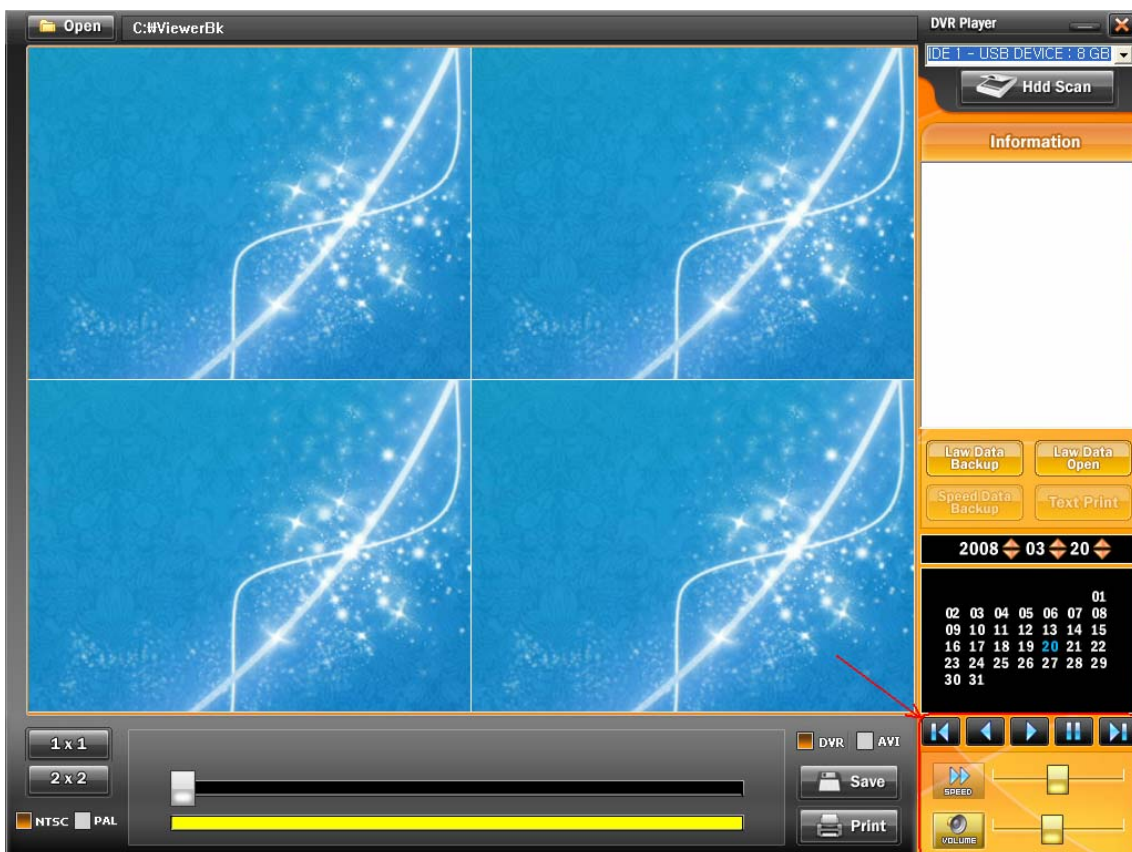



In the above picture,

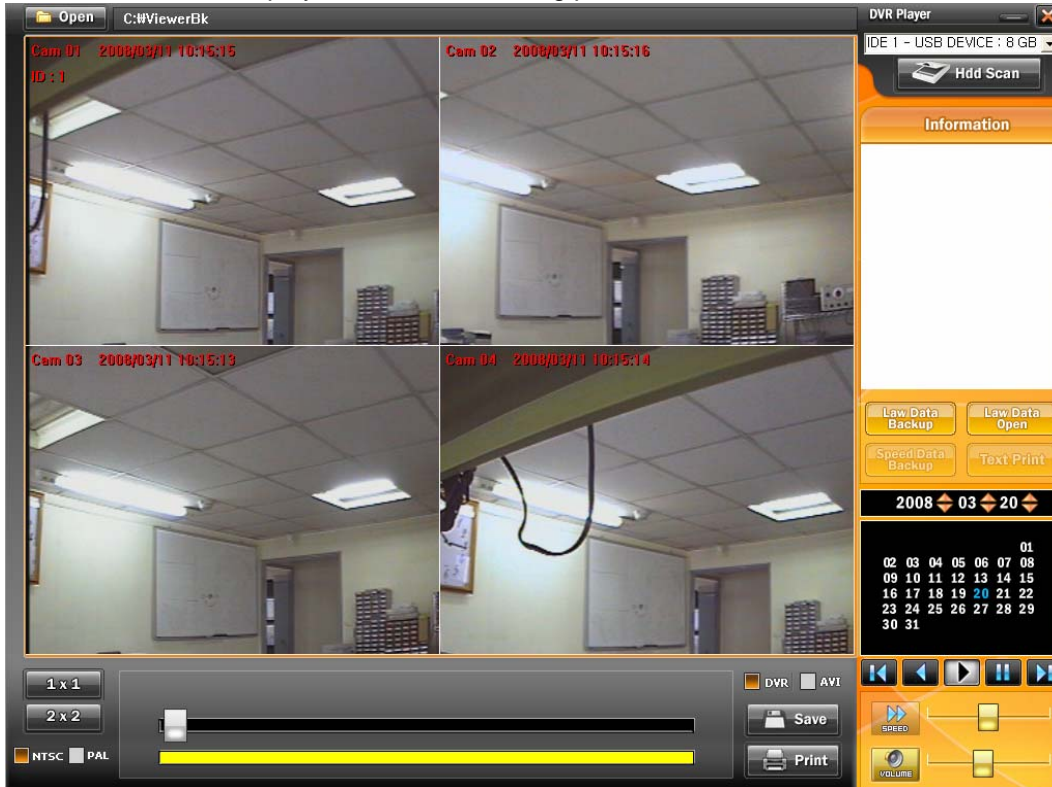
Screen minimizing Icon : Minimize the screen when you open other files. When you back to DVR Player screen again, please click the DVR Player Icon on the bottom of the windows screen.

Closing Icon : Closing this program in the computer. You are also able to close this program with ESC or Alt+F4 key.

After selection of USB Device, the computer screen will be shown as under and you could play the recorded moving picture in your computer screen.







Click the  icon to play the recorded moving picture.



The functions of each icon are as below.



-  : Playing picture
-  : Playback
-  : Stop playing
-  : Showing field by field



- To control the playing speed with the centre bar.
- From the center, middle speed, Left side is for lower and right side is for higher speed.



- Volume icon is voice On/Off toggle and also able to adjust the volume with the center bar. The recorded voice will be come out at only standard playing speed of moving picture.

Able to change the full screen to divided screen and it in reverse with below icon.



: Full Screen Icon

: Divided Screen Icon to 2 x 2 times.

Below Check BOX is to select NTSC or PAL mode. Definitely should be selected after loading to USB Device and it is basically set to NTSC.



You are able to print the playing screen with below Print Icon.



- On the above full screen picture, the calendar of right side is showing not recorded date, but actual date.

3. Back-up

On the playing this program, you are able to save the needed screen with click the below 'Save' icon. On the check icon, If checked DVR, the program will be saved by it's inherent form (Please ref 5. Backup Viewer). To check AVI and save, then the moving screen will be renewed in windows' media program.

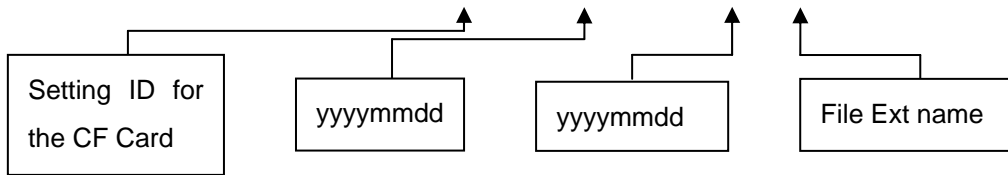


The back-up file is basically saved at C:\ViewerBk and back up the file by DVR, also the back-up viewer will be created in this file folder and able to move the storage with the click the OPEN icon.

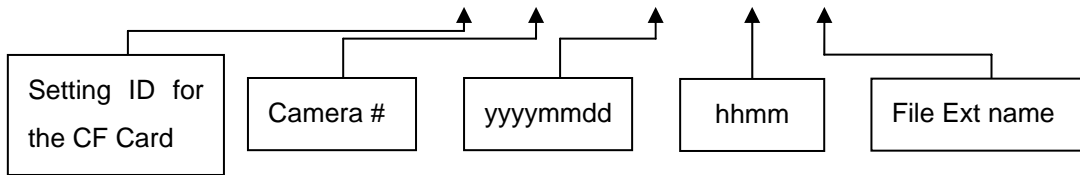


The file format which will be created when you back up through DVR will be ID_yyyymmdd_hhmmss.cwd, and of which back up through AVI will be ID_camera#-yyymmdd_hhmm.cvi. Please see the under example.

In case of DVR back-up, the file format : **0003_20080328_170522.cwd**



In case of AVI back-up, the file format : **0003_01_20080328_1717.avi**



4. Law Data Back-up

Law Data Back-up is the function of saving in your PC the full or partial files which is stored in CF card, and able to open it with click Law Data Open Icon.

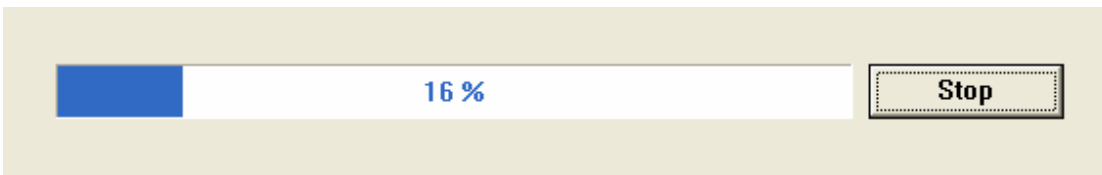


On the yellow line, you point the mouse cursor, to push the left side button of your mouse to get the starting point and the right side button to get the end point of back-up terminal.

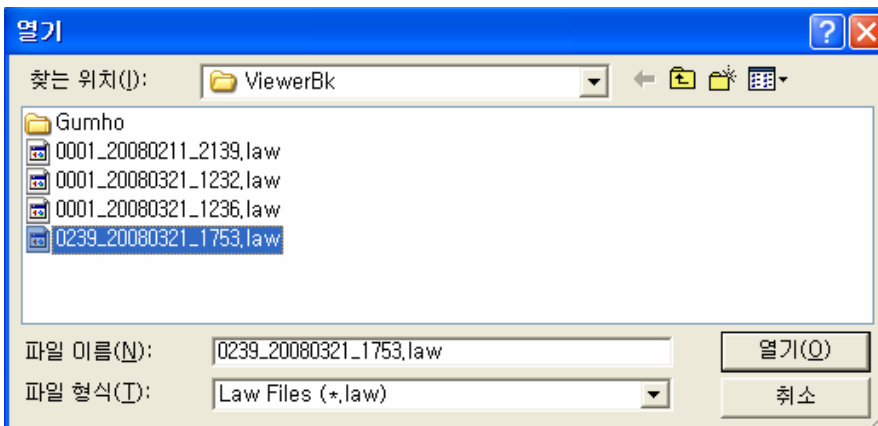




After specifying the terminal, push the Law Data Backup icon to get the back-up files in your PC, and push the 'Stop' to stop it. In the file format, the time and date means the originated time of the moving picture.

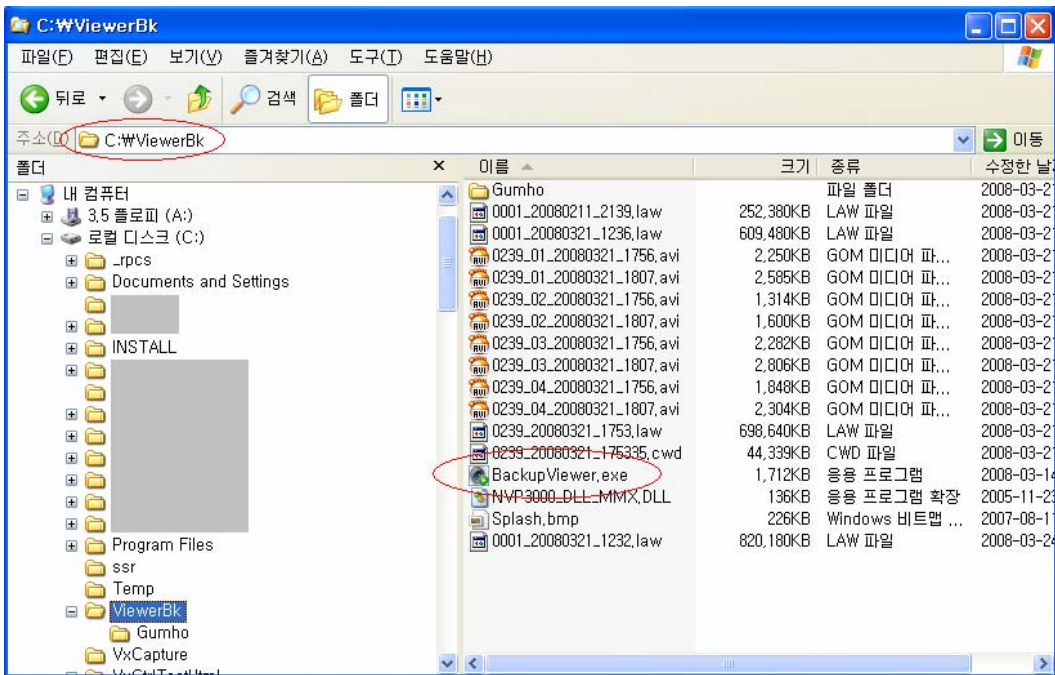


Click the 'Law Data Open' icon to play the saved moving picture.

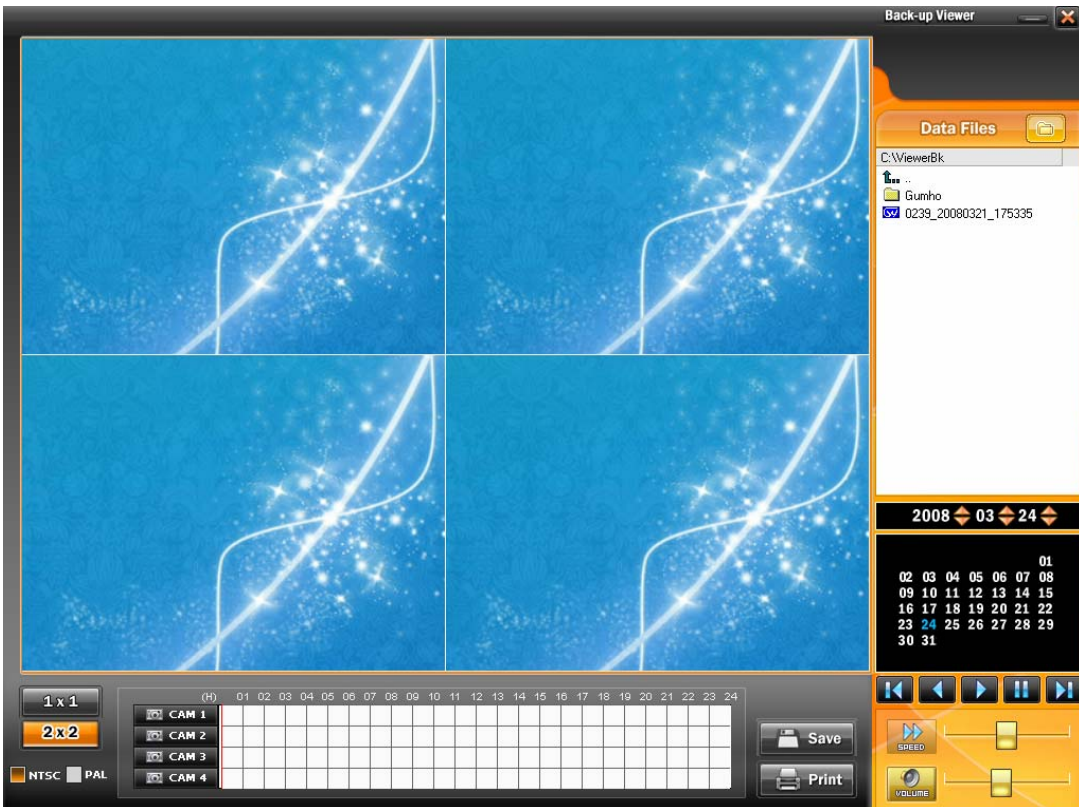


5. Backup Viewer

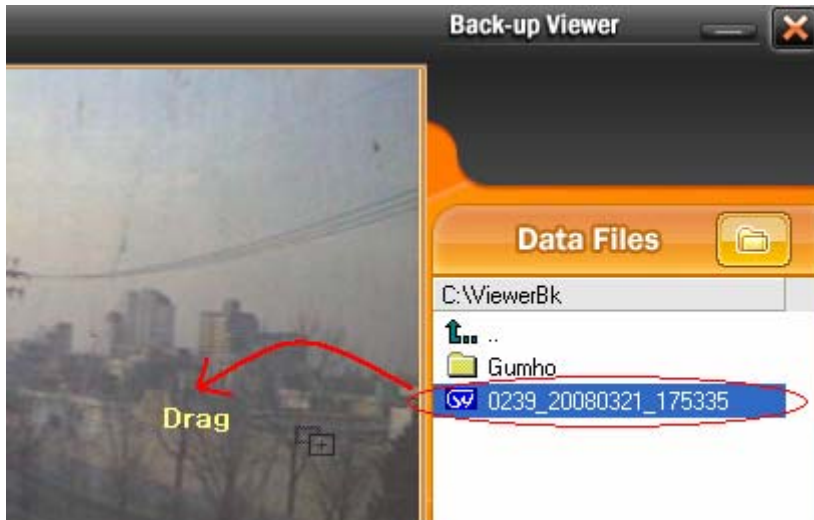
The file back up by DVR format is basically saved at C:\ViewerBk folder. As you see the under picture, open the explorer and the folder, you may find 'BackupViewer.exe,



Double click the 'BackupViewer.exe' icon to see the main screen as under.



Click the stored file and drag it as under picture to play the moving picture.



Basic using process is very similar of it's DVR Player and 'Save' button is working in the same as AVI format from DVR Player.